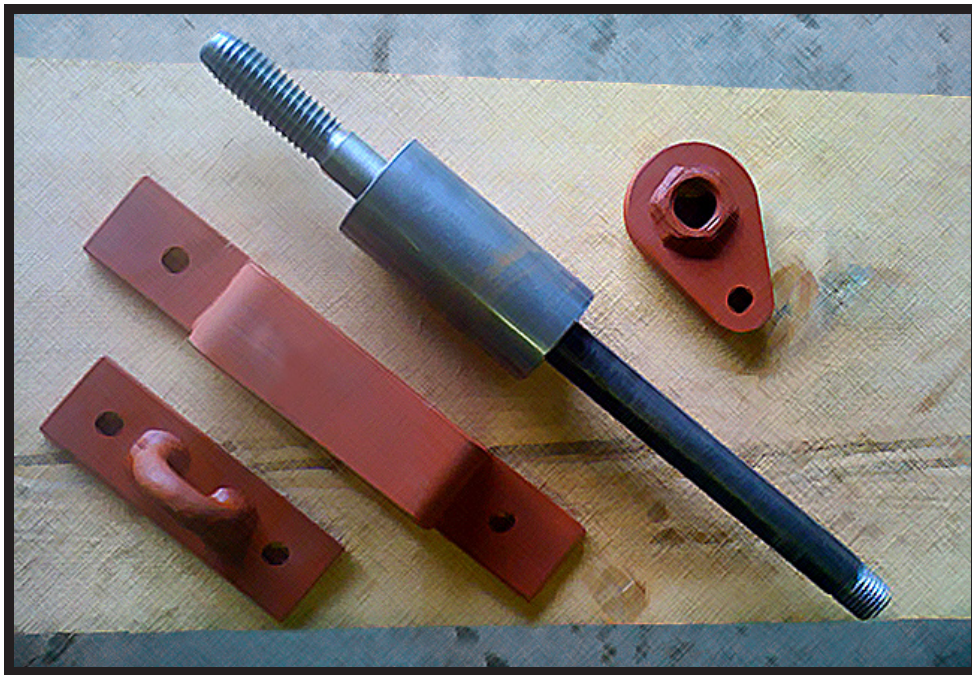


TREEHOUSE WORKSHOP, INC.



Specialty TreeHouse Hardware 2012 Catalog

TreeHouse Workshop, Inc.

PO Box 1135

Fall City, WA 98024

p. 425.441.8568/ f. 425.441.8569

Specialty TreeHouse Hardware

As each tree is different, so is every treehouse. For this reason, TreeHouse Workshop, Inc. (THW) treats each request as a custom order. With information you provide on your trees and treehouse design, we will be able to recommend the appropriate hardware package from the specialty supplies below. Purchases will come with installation instructions.

Please call 206-782-0208 or email <jake@treehouseworkshop.com> to get started on your order.

*prices vary with cost of steel.

**A 10% discount will be honored with purchase of 5 or more sets, or with \$150 in consultation services



Treehouse Attachment Bolts "TAB's"; aka The Garnier Limb "GL"

A heavy machine bolt made of 4140 Carbon Steel, the GL allows you to insert a "branch" into a tree, in an arboreal friendly manner, exactly where you need it.

\$230-\$270

GL



Pear Nut (aka Teardrop nut)

A unique nut that is screwed onto the end of the GL and creates the attachment point for the GL Suspender System.

\$48.00

NP



"K" Nut

A modified version of a Pear Nut, also used as the attachment point for the GL Suspender System, particularly when the suspender angle back to the tree is greater than 10°.

\$48.00

NK

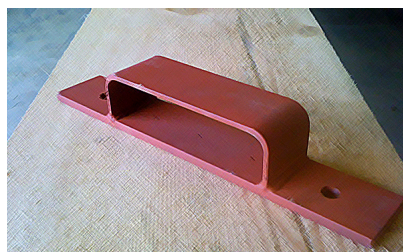


Uplift Arrestor - Static

An uplift arrestor is used as an accessory to the GL. The "Static" allows for tree growth while holding the beam laterally in place. Used mostly with "anchor" trees.

\$50.00

UAS

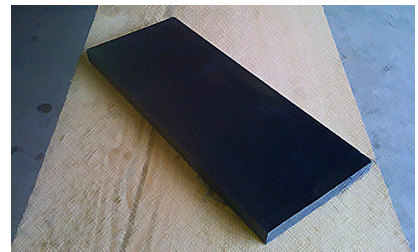


Uplift Arrestor - Dynamic

The most common accessory to the GL. The "Dynamic" allows for significant tree movement and growth. It holds the beam to "slide" within a range of lateral movement while still holding it in place.

\$70.00

UAD



UHMW Pad

A high tech industrial plastic material used with Dynamic Arrestor Brackets and occasional at the intersection of beams to reduce friction. (UHMW stands for Ultra High Molecular Weight, we pronounce it umwha).

\$12.00

UHMW



Lag Bolts

Galvanized lag bolts. Used to secure Arrestor Brackets to beams, to anchor the top end of the Suspender Systems into the tree, or at the foot of a knee brace.

\$3.00
\$43.00

LAG1/2x4
LAG1x10

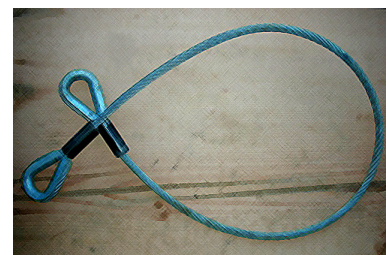


Shackles & Turnbuckles

Essential components of the GL Suspender System.

\$14.00
\$47.50

SHK
TBK



Cables

Additional component of the GL Suspender System. Lengths will be customized to your order.

\$43.00
\$47.50

CBL4/6
CBL7/10

Drill Bit Rental or Purchase

3 components are essential for drilling into the tree

- 1) A 1" diameter/18" long Wood Auger Bit found at Lowe's and Home Depot for around \$25 to \$32.
- 2) A 3" diameter, Milwaukee brand, Self-Feed Bit found online at Amazon.com, Tacoma Screw Products, or, special ordered at Lowe's or Home Depot. Tacoma Screw price is around \$87
- 3) A custom-made Pilot-Guide Bit. (Component (3) marries up with Component (2); they have to work together.) Purchased through THW, Component (3) is \$115.

Rental/Purchase Options*

- A) Purchase Component (1) at your local store. Rent (2) and (3) from THW for \$50 for the combo with a \$180 returnable deposit.
- B) Purchase Component (1) and (2). Purchase Component (3) from THW for \$115.
- C) Purchase Component (1). Purchase (2) and (3) from THW for \$230.
- D) Purchase Components (1), (2) and (3) from THW for \$275.

*Does not include shipping and handling

Ordering Custom Hardware

Custom Hardware other than GLs, such as, "J", "Nave", and/or iron cross brackets are available and sometimes recommended. These brackets may be GL mounted when the loads dictate.



SERVICES

Plan Review & Consulting = \$90 p/hr Design = \$110 - \$200 p/hour

TreeHouse Workshop, Inc.
www.treehouseworkshop.com
p. 425.441.8568 / f. 425.441.8569